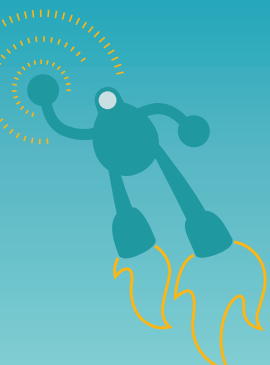


Administrative Assistant



QWOWTM
Qualcomm® World of Work

Inspired by Qualcomm® Thinkabit LabTM

Administrative Assistant

I am responsible for supporting specific and on-going departmental projects. I also arrange travel, schedule meetings, and set up luncheons and conferences.

Wages & Employment Trends

Median Wages (2016)

\$16.74 hourly, \$34,820 annually

Projected Growth (2014-2024)

 **Slower than average (2% to 4%)**

Education Level Required

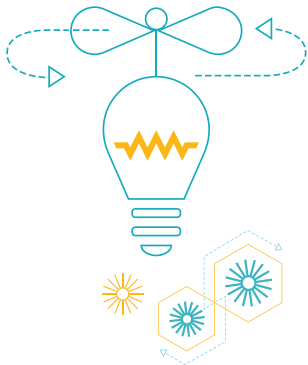
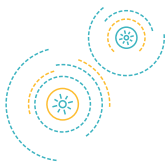
39  **High school diploma or equivalent**

14  **Some college, no degree**

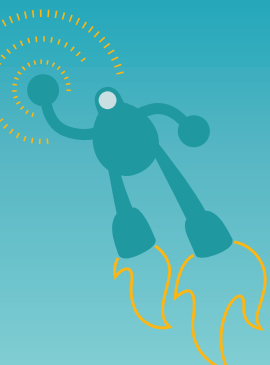
37  **Associate's degree**

O*NET Search Code  **43-6014.00**

Source: www.onetonline.org



AV Production Technician



QWOWTM
Qualcomm® World of Work

Inspired by Qualcomm® Thinkabit LabTM

AV Production Technician

I am responsible for all audio and visual equipment for live events hosted on our Qualcomm sites. I set up and operate various equipment, such as microphones, speakers, video screens, projectors, and recording equipment.

Wages & Employment Trends

Median Wages (2016)

\$20.30 hourly, \$42,230 annually

Projected Growth (2014-2024)

 **Faster than average (9% to 13%)**

Education Level Required

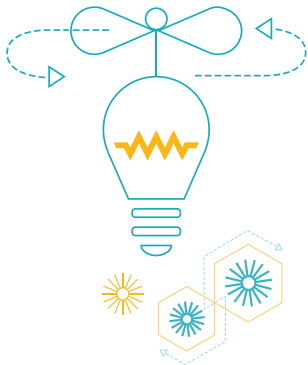
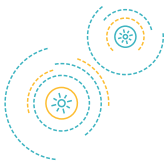
26   **High school diploma or equivalent**

29   **Associate's degree**

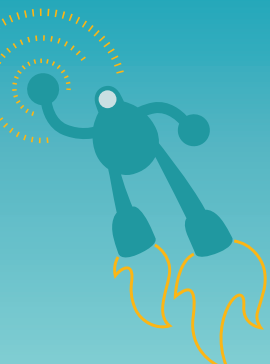
16   **Bachelor's degree**

O*NET Search Code  27-4011.00

Source: www.onetonline.org



Business Development



QWOWTM
Qualcomm® World of Work

Inspired by Qualcomm® Thinkabit Lab™

Business Development

I am responsible for leading the development of new business projects using Qualcomm technologies. I maintain relationships with key internal and external partners in the industry, and I work to draft, negotiate, and execute agreements with our customers.

Wages & Employment Trends

Median Wages (2016)

\$48.08 hourly, \$100,000 annually

Projected Growth (2014-2024)

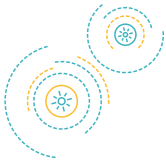
 **Average (5% to 8%)**

Education Level Required

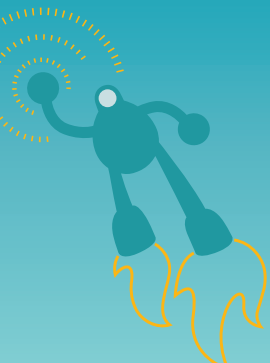
24		Associate's degree
43		Bachelor's degree
20		Master's degree

O*NET Search Code  41-9031.00

Source: www.onetonline.org



Chef



QWOW™

Qualcomm® World of Work

Inspired by Qualcomm® Thinkabit Lab™

Chef

I am responsible for creating a great dining experience for all my customers. I develop new menus, cost out those menus, prepare food, and manage the cooks. I also order food from various vendors and keep quality and safety records. The best part of my job is the research and development of new food items.

Wages & Employment Trends




Median Wages (2016)

\$11.61 hourly, \$24,140 annually

Projected Growth (2014-2024)

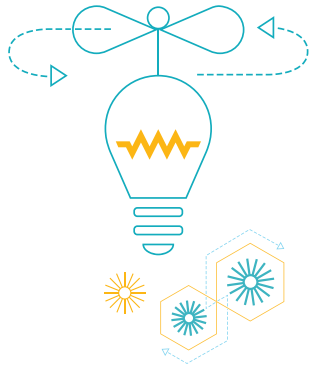
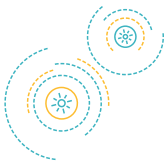
■■■■ Much faster than average (14% or higher)

Education Level Required

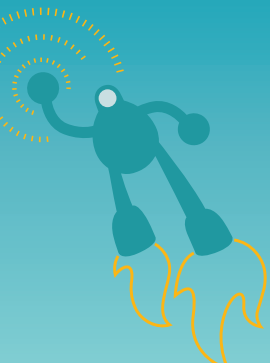
33		Less than a High school diploma
38		High school diploma or equivalent
11		Some college, no degree

O*NET Search Code  **35-2014.00**

Source: www.onetonline.org



Data Analyst



QWOWTM
Qualcomm® World of Work

Inspired by Qualcomm® Thinkabit LabTM

Data Analyst

I am responsible for collecting, analyzing, and reporting data necessary to support Qualcomm. I gain insights and trends from data so employees can make informed decisions. I work with various internal departments and external organizations.

Wages & Employment Trends

Median Wages (2016)

\$41.59 hourly, \$86,510 annually

Projected Growth (2014-2024)

 **Slower than average (2% to 4%)**

Education Level Required

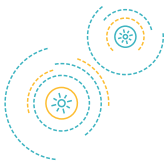
4  **Some college, no degree**

58  **Bachelor's degree**

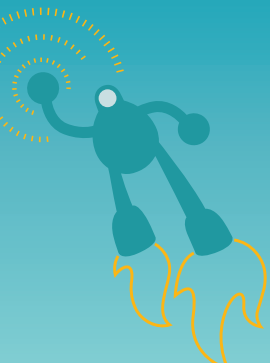
33  **Master's degree**

O*NET Search Code  **15-1199.08**

Source: www.onetonline.org



Environmental Health & Safety



QWOWTM
Qualcomm® World of Work

Inspired by Qualcomm® Thinkabit LabTM

Environmental Health & Safety

I am responsible for inspecting and evaluating equipment and processes to ensure Qualcomm meets or exceeds Federal and State environmental and safety requirements. I make sure our employees and visitors are safe by identifying potential hazards, such as chemical and radiological materials, and by ensuring that how we conduct our business is done in a way that protects the environment.

Wages & Employment Trends

Median Wages (2016)

\$23.47 hourly, \$48,820 annually

Projected Growth (2014-2024)

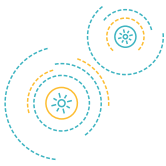
■ ■ ■ ■ Faster than average (9% to 13%)

Education Level Required

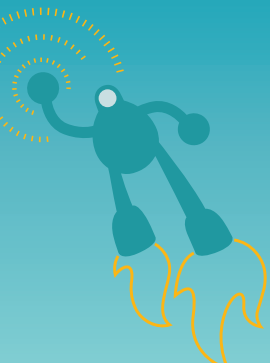


O*NET Search Code  29-9012.00

Source: www.onetonline.org



Event Planner



QWOWTM
Qualcomm® World of Work

Inspired by Qualcomm® Thinkabit LabTM

Event Planner

I am responsible for coordinating event-related services, such as accommodations, transportation, catering, signage, and displays. I manage venues, vendor relationships, and budget reconciliation. I work on events such as product launches, department meetings, and other special events.

Wages & Employment Trends

Median Wages (2016)

\$22.76 hourly, \$47,350 annually

Projected Growth (2014-2024)

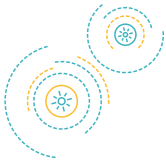
■ ■ ■ ■ Faster than average (9% to 13%)

Education Level Required

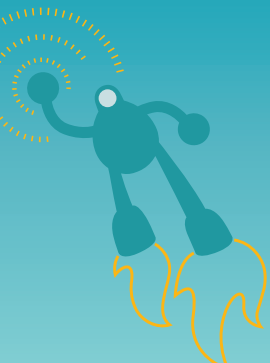
41 **Bachelor's degree**

O*NET Search Code 🔍 13-1121.00

Source: www.onetonline.org



Facilities Manager



QWOWTM
Qualcomm® World of Work

Inspired by Qualcomm® Thinkabit LabTM

Facilities Manager

I am responsible for keeping the plumbing, air conditioning, and electrical systems at Qualcomm operating 24/7. I manage operation and general maintenance tasks requested by employees.

Wages & Employment Trends

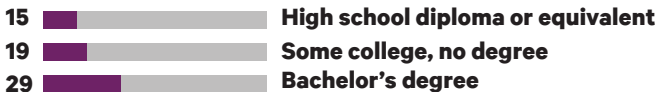
Median Wages (2016)

\$47.74 hourly, \$99,310 annually

Projected Growth (2014-2024)

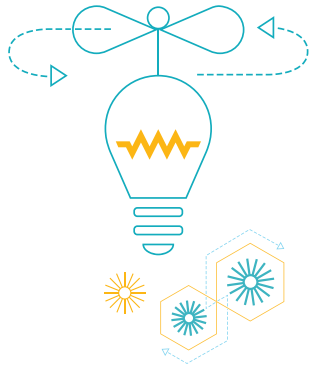
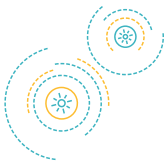
 **Average (5% to 8%)**

Education Level Required

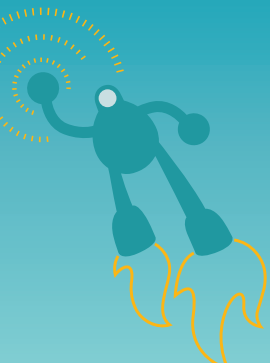


O*NET Search Code  11-1021.00

Source: www.onetonline.org



Financial Analyst



QWOWTM
Qualcomm® World of Work

Inspired by Qualcomm® Thinkabit Lab™

Financial Analyst

I am responsible for preparing monthly, quarterly, and yearly financial plans. I work with money and spend a lot of time reviewing and analyzing budgets and keeping track of expenses.

Wages & Employment Trends

Median Wages (2016)

\$39.31 hourly, \$81,760 annually

Projected Growth (2014-2024)

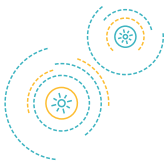
■ ■ ■ ■ Faster than average (9% to 13%)

Education Level Required

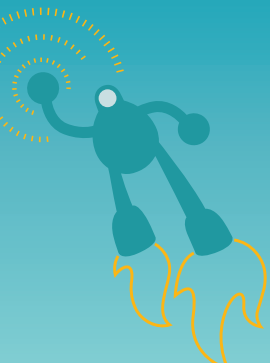
2		Associate's degree
61		Bachelor's degree
35		Master's degree

O*NET Search Code  13-2051.00

Source: www.onetonline.org



Graphic Designer



QWOWTM
Qualcomm® World of Work

Inspired by Qualcomm® Thinkabit LabTM

Graphic Designer

I am responsible for creating visuals that inform and inspire. Using software, as well as pencil and paper, I design and develop creative layouts for internal and external communications, including advertisements, brochures, presentations, employee training materials, and corporate reports.

Wages & Employment Trends

Median Wages (2016)

\$22.90 hourly, \$47,640 annually

Projected Growth (2014-2024)

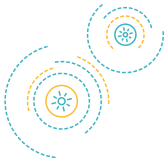
■ ■ ■ ■ **Little or no change (-1% to 1%)**

Education Level Required

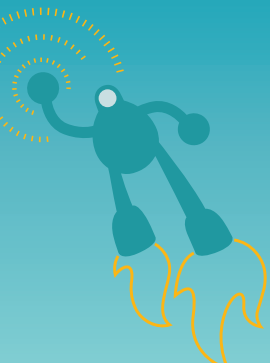
8	■	Post-secondary certificate
15	■	Associate's degree
62	■	Bachelor's degree

O*NET Search Code  27-1024.00

Source: www.onetonline.org



Hardware Engineer



QWOWTM
Qualcomm® World of Work

Inspired by Qualcomm® Thinkabit Lab™

Hardware Engineer

I am responsible for designing, building, testing, and modifying designs that take chips, circuit boards, processors, and other components and turn them into products for Qualcomm. I often use computer simulations to design and test an idea. I work closely with customers, business planners, and software development teams. Sometimes I file patents on my unique ideas.

Wages & Employment Trends



Median Wages (2016)

\$55.33 hourly, \$115,080 annually

Projected Growth (2014-2024)

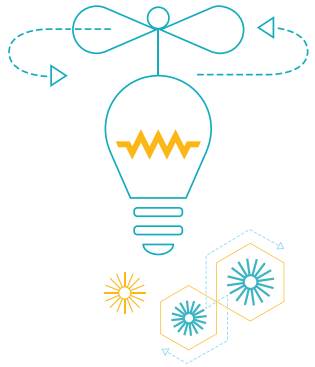
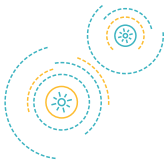
 **Slower than average (2% to 4%)**

Education Level Required

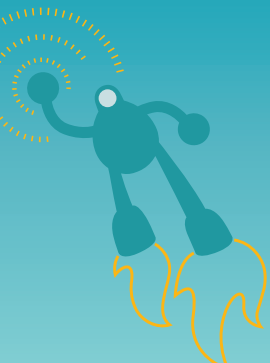
68		Bachelor's degree
27		Master's degree
5		Doctoral degree

O*NET Search Code  **17-2061.00**

Source: www.onetonline.org



Human Resources



QWOWTM
Qualcomm® World of Work

Inspired by Qualcomm® Thinkabit Lab™

Human Resources

I am responsible for helping Qualcomm employees by assisting them with their health benefits, providing training and career development, and helping with any problems employees have with other employees. I interpret Federal and State law, policies, and procedures; advise on fair and equitable employment practices; and provide leadership and guidance in support of our Qualcomm culture and policies.

Wages & Employment Trends

Median Wages (2016)

\$51.40 hourly, \$106,910 annually

Projected Growth (2014-2024)

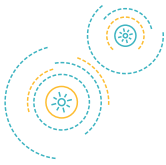
 **Faster than average (9% to 13%)**

Education Level Required

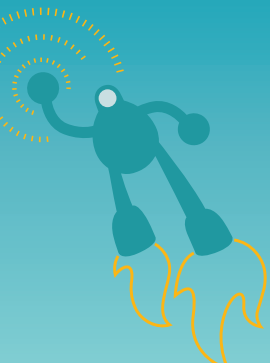
68		Bachelor's degree
9		Post-baccalaureate certificate
18		Master's degree

O*NET Search Code  11-3121.00

Source: www.onetonline.org



Immigration Specialist



QWOWTM
Qualcomm® World of Work

Inspired by Qualcomm® Thinkabit Lab™

Immigration Specialist

I am responsible for managing the international visas and work authorizations for employees. This includes employees who need to travel for work or who are being hired from another country. We also sponsor our employees for U.S. permanent resident status.

Wages & Employment Trends

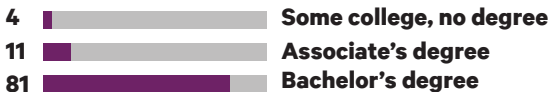
Median Wages (2016)

\$28.45 hourly, \$59,180 annually

Projected Growth (2014-2024)

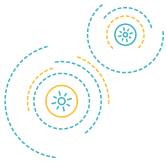
 **Average (5% to 8%)**

Education Level Required

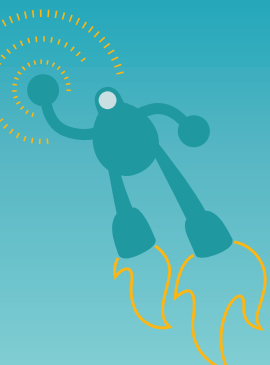


O*NET Search Code  13-1071.00

Source: www.onetonline.org



Internal Auditor



QWOWTM
Qualcomm® World of Work

Inspired by Qualcomm® Thinkabit LabTM

Internal Auditor

I am responsible for planning various audits at Qualcomm to make sure that key business and financial risks are managed and that our processes comply with company policies and Federal and State law. I review processes, gather and examine evidence, document results, and recommend ways of managing risks and improving processes.

Wages & Employment Trends

Median Wages (2016)

\$32.76 hourly, \$68,150 annually

Projected Growth (2014-2024)

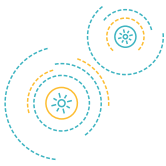
■ ■ ■ ■ Faster than average (9% to 13%)

Education Level Required

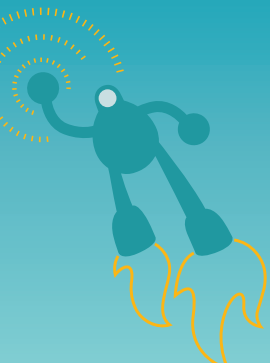


O*NET Search Code  13-2011.02

Source: www.onetonline.org



IT Engineer



QWOWTM
Qualcomm® World of Work

Inspired by Qualcomm® Thinkabit LabTM

IT Engineer

I am responsible for installing, configuring, and supporting computer networks. I set up and support accounts and allow secure internet and network access across the company for laptops, workstations, tools, servers, and storage.

Wages & Employment Trends

Median Wages (2016)

\$41.59 hourly, \$86,510 annually

Projected Growth (2014-2024)

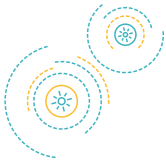
 **Slower than average (2% to 4%)**

Education Level Required

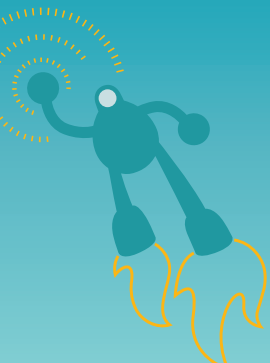


O*NET Search Code  15-1199.09

Source: www.onetonline.org



Learning Specialist



QWOWTM
Qualcomm® World of Work

Inspired by Qualcomm® Thinkabit LabTM

Learning Specialist

I am responsible for designing and conducting training programs to support employees. This includes providing training on new technologies or products as well as workshops to help improve individual or team performance.

Wages & Employment Trends



Median Wages (2016)

\$28.37 hourly, \$59,020 annually

Projected Growth (2014-2024)

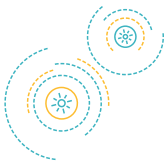
 **Average (5% to 8%)**

Education Level Required

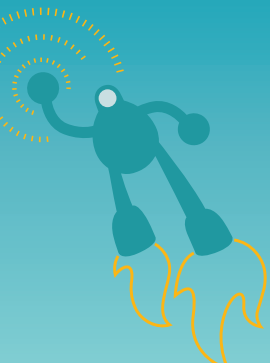
58		Bachelor's degree
11		Post-baccalaureate certificate
17		Master's degree

O*NET Search Code  13-1151.00

Source: www.onetonline.org



Legal Analyst



QWOWTM
Qualcomm® World of Work

Inspired by Qualcomm® Thinkabit LabTM

Legal Analyst

I am responsible for helping lawyers investigate facts, prepare legal documents, and research a legal precedent. I am a subject-matter expert on the Qualcomm licensing portfolio. I do a lot of reading and writing in my job.

Wages & Employment Trends

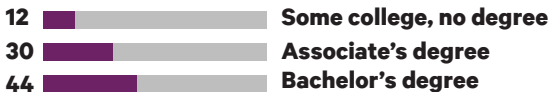
Median Wages (2016)

\$23.80 hourly, \$49,500 annually

Projected Growth (2014-2024)

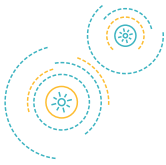
 **Average (5% to 8%)**

Education Level Required

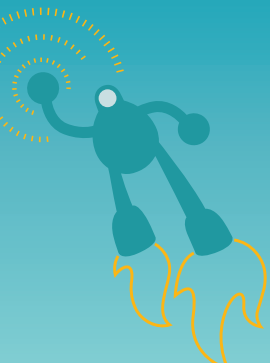


O*NET Search Code  23-2011.00

Source: www.onetonline.org



Manufacturing Material Handler



QWOWTM
Qualcomm® World of Work

Inspired by Qualcomm® Thinkabit Lab™

Manufacturing Material Handler

I am responsible for unloading delivery vehicles, receiving materials, stocking received materials, and ensuring that items received are accurately entered into Qualcomm's database. I regularly lift more than 50 pounds.

Wages & Employment Trends

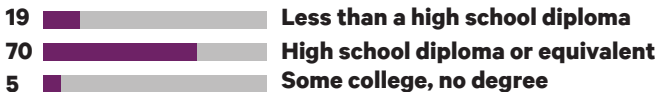
Median Wages (2016)

\$12.49 hourly, \$25,980 annually

Projected Growth (2014-2024)

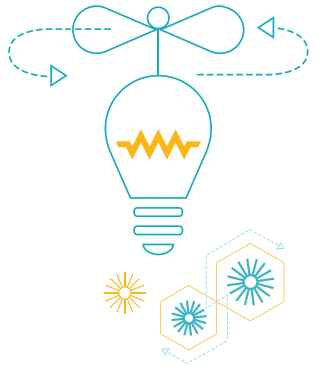
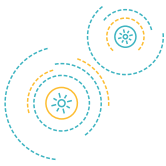
 **Average (5% to 8%)**

Education Level Required

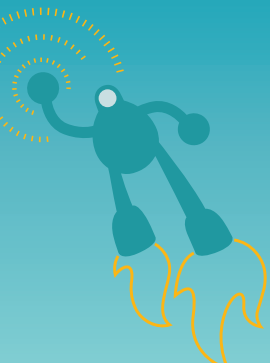


O*NET Search Code  **53-7062.00**

Source: www.onetonline.org



Marketing Analyst



QWOWTM
Qualcomm® World of Work

Inspired by Qualcomm® Thinkabit LabTM

Marketing Analyst

I am responsible for helping Qualcomm teams like Business Development or Marketing Communications understand the competition, partners, and trends in the technology industry. This information is used to determine potential sales of a new product or service or positioning for a marketing campaign.

Wages & Employment Trends

Median Wages (2016)

\$30.08 hourly, \$62,560 annually

Projected Growth (2014-2024)

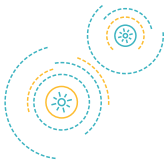
■ ■ ■ ■ Much faster than average (14% or higher)

Education Level Required

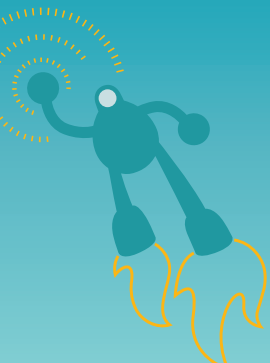


O*NET Search Code  13-1161.00

Source: www.onetonline.org



Patent Attorney



QWOWTM
Qualcomm® World of Work

Inspired by Qualcomm® Thinkabit LabTM

Patent Attorney

I am responsible for understanding the laws governing intellectual property, specifically patents, and for helping to assure the success of applications for patents from Qualcomm and its inventors.

Wages & Employment Trends

Median Wages (2016)

\$56.81 hourly, \$118,160 annually

Projected Growth (2014-2024)

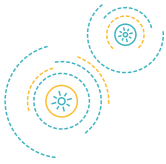
 **Average (5% to 8%)**

Education Level Required

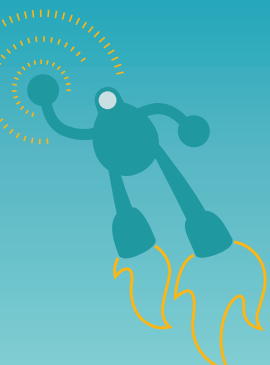
68		Professional degree
31		Doctoral degree
1		Post-doctoral training

O*NET Search Code  23-1011.00

Source: www.onetonline.org



Government Affairs



QWOWTM
Qualcomm® World of Work

Inspired by Qualcomm® Thinkabit Lab™

Government Affairs

I am responsible for working with government agencies in the United States and abroad. I work closely with Qualcomm lawyers to ensure that the company is following national and international laws.

Wages & Employment Trends

Median Wages (2016)

\$54.95 hourly, \$114,290 annually

Projected Growth (2014-2024)

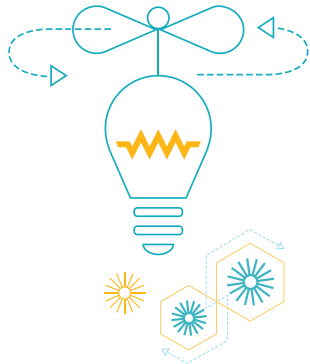
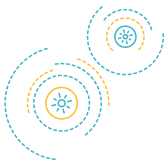
 **Decline (-2% or lower)**

Education Level Required

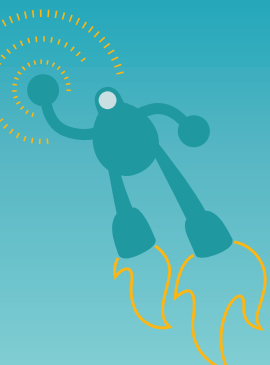


O*NET Search Code  19-3094.00

Source: www.onetonline.org



Public Relations



QWOWTM
Qualcomm® World of Work

Inspired by Qualcomm® Thinkabit LabTM

Public Relations

I am responsible for helping build Qualcomm's positive image outside of the company, particularly with reporters and public opinion leaders. I create messaging and communication materials, such as press releases, that help us tell Qualcomm's story.

Wages & Employment Trends

Median Wages (2016)

\$27.89 hourly, \$58,020 annually

Projected Growth (2014-2024)

 **Average (5% to 8%)**

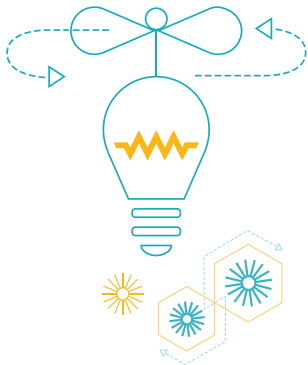
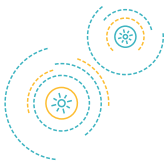
Education Level Required

92  **Bachelor's degree**

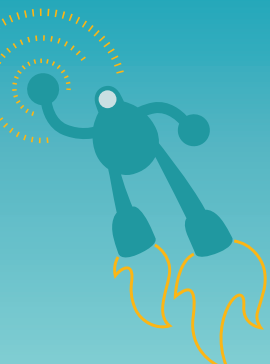
8  **Master's degree**

O*NET Search Code  **27-3031.00**

Source: www.onetonline.org



Recruiter



QWOWTM
Qualcomm® World of Work

Inspired by Qualcomm® Thinkabit LabTM

Recruiter

I am responsible for scouting the highest performers in the industry, sometimes searching all over the world. Once a great candidate is identified, we interview and hire them, and I help process the new Qualcomm employee's paperwork.

Wages & Employment Trends

Median Wages (2016)

\$28.45 hourly, \$59,180 annually

Projected Growth (2014-2024)

 **Average (5% to 8%)**

Education Level Required

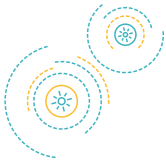
68  **Bachelor's degree**

9  **Post-baccalaureate certificate**

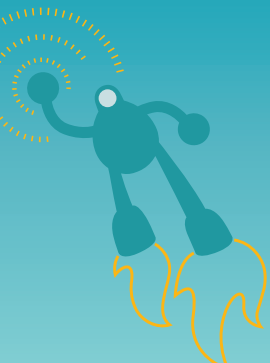
18  **Master's degree**

O*NET Search Code  **13-1071.00**

Source: www.onetonline.org



Regulatory Affairs



QWOWTM
Qualcomm® World of Work

Inspired by Qualcomm® Thinkabit LabTM

Regulatory Affairs

I am responsible for gathering and preparing materials for submission to regulatory agencies on matters that concern Qualcomm. I meet with regulators to discuss government policies and protocols.

Wages & Employment Trends

Median Wages (2016)

\$31.99 hourly, \$66,540 annually

Projected Growth (2014-2024)

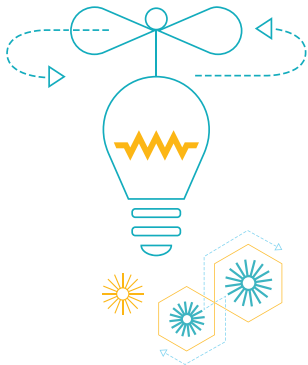
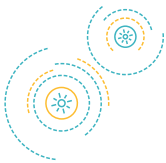
 **Slower than average (2% to 4%)**

Education Level Required

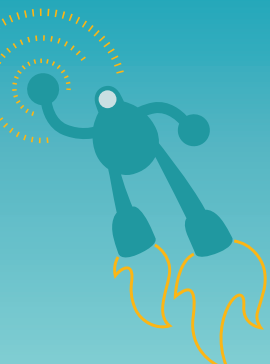


O*NET Search Code  **13-1041.07**

Source: www.onetonline.org



Security Officer



QWOWTM
Qualcomm® World of Work

Inspired by Qualcomm® Thinkabit LabTM

Security Officer

I am responsible for providing security for all Qualcomm facilities and personnel. I maintain a safe and secure environment for customers and employees by patrolling and monitoring Qualcomm premises. I often communicate from a web based security system so I can provide clear and prompt messaging for those in need.

Wages & Employment Trends


Median Wages (2016)

\$33.19 hourly, \$69,040 annually

Projected Growth (2014-2024)

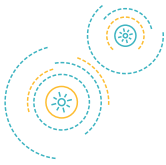
 **Average (5% to 8%)**

Education Level Required

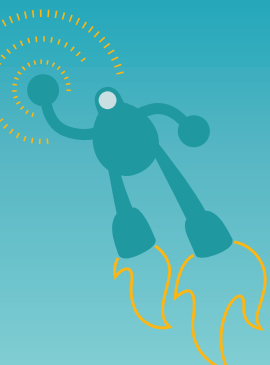
8		Post-secondary certificate
15		Associate's degree
62		Bachelor's degree

O*NET Search Code  13-1199.02

Source: www.onetonline.org

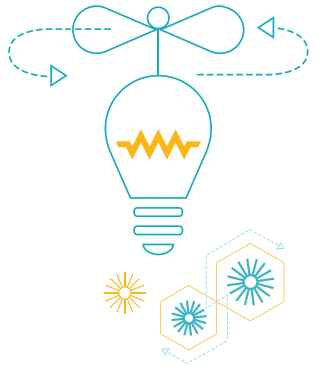
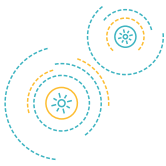


Shuttle Driver

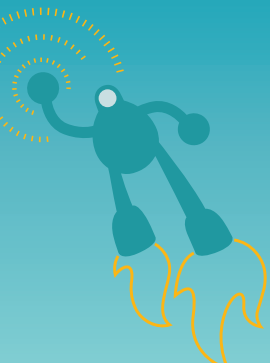


QWOWTM
Qualcomm® World of Work

Inspired by Qualcomm® Thinkabit LabTM



Software Engineer Application Development



QWOWTM
Qualcomm® World of Work

Inspired by Qualcomm® Thinkabit LabTM

Software Engineer Application Development

I am responsible for designing and coding the apps that you interact with on your mobile devices, including automobiles, medical devices, and, of course, smartphones. I analyze user needs and develop software solutions for both Android and IOS-based environments. Sometimes I file patents on my unique ideas.

Wages & Employment Trends

Median Wages (2016)

\$48.12 hourly, \$100,080 annually

Projected Growth (2014-2024)

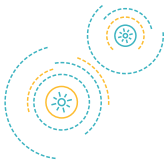
■■■■ Much faster than average (14% or higher)

Education Level Required

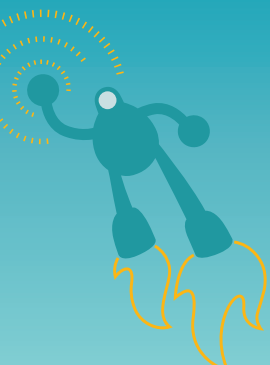


O*NET Search Code  15-1132.00

Source: www.onetonline.org

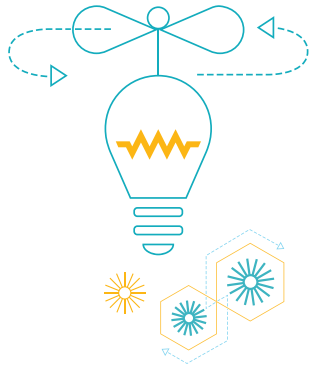
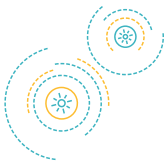


Software Engineer Embedded

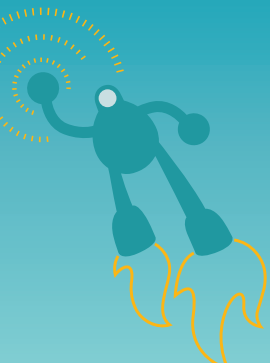


QWOWTM
Qualcomm® World of Work

Inspired by Qualcomm® Thinkabit LabTM



Software Security Engineer



QWOWTM
Qualcomm® World of Work

Inspired by Qualcomm® Thinkabit Lab™

Software Security Engineer

I am responsible for designing and coding the features that prevent attacks on Qualcomm products. I work on the research, design, development, and implementation of innovative software security products for secure access to mobile and IoT devices. Sometimes I file patents on my unique ideas.

Wages & Employment Trends

Median Wages (2016)

\$44.52 hourly, \$92,600 annually

Projected Growth (2014-2024)

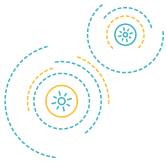
■■■■ Much faster than average (14% or higher)

Education Level Required

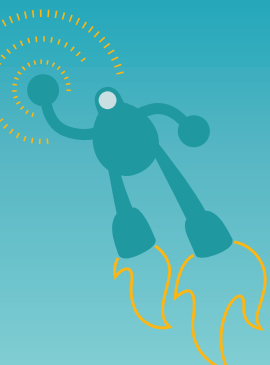
10		Post-secondary certificate
65		Bachelor's degree
19		Post-baccalaureate certificate

O*NET Search Code  15-1122.00

Source: www.onetonline.org

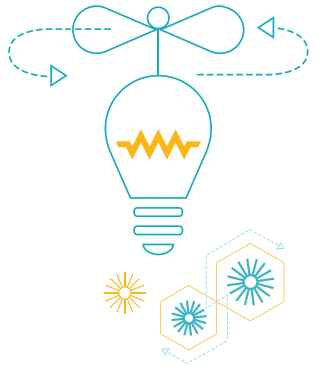
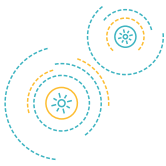


Systems Engineer

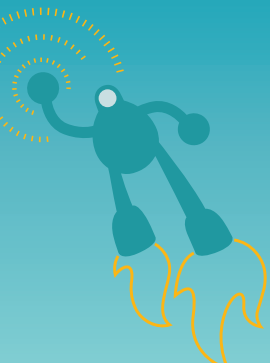


QWOWTM
Qualcomm® World of Work

Inspired by Qualcomm® Thinkabit Lab™



Technical Writer Associate



QWOWTM
Qualcomm® World of Work

Inspired by Qualcomm® Thinkabit LabTM

Technical Writer Associate

I am responsible for planning, writing, and editing technical documents for computer and mobile communication technology. I work with product and program managers to plan and manage content delivered to internal engineers and customers. I collaborate with users and technical staff to gather data. I create architectures and structures to make information easy for customers to find and use. I research and translate technical information into formats suitable for technical users.

Wages & Employment Trends

Median Wages (2016)

\$33.58 hourly, \$69,850 annually

Projected Growth (2014-2024)

■ ■ ■ ■ Faster than average (9% to 13%)

Education Level Required

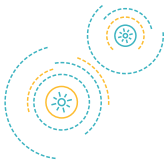
16  **Some college, no degree**

35  **Associate's degree**

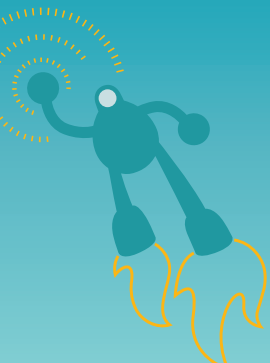
33  **Bachelor's degree**

O*NET Search Code  **27-3042.00**

Source: www.onetonline.org



Test Engineer



QWOWTM
Qualcomm® World of Work

Inspired by Qualcomm® Thinkabit LabTM

Test Engineer

I am responsible for testing the systems on Qualcomm chips to make sure that they operate properly and under extreme conditions. I work closely with systems engineers, software engineers, hardware engineers, and other members of the system integration and testing groups. I use computer equipment to test and find problems with new hardware and software.

Wages & Employment Trends

Median Wages (2016)

\$29.90 hourly, \$62,190 annually

Projected Growth (2014-2024)

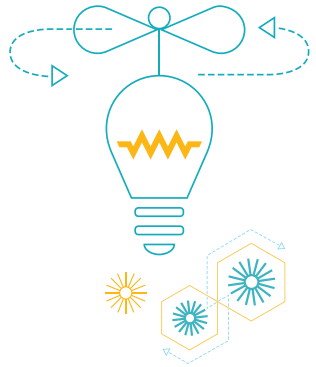
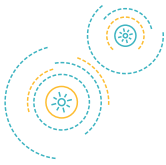
 **Decline (-2% or lower)**

Education Level Required

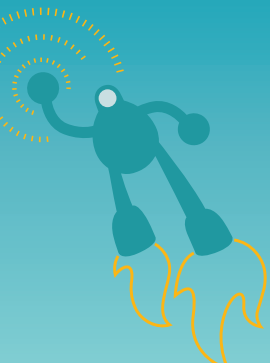
12		High school diploma or equivalent
24		Post-secondary certificate
43		Associate's degree

O*NET Search Code  17-3023.01

Source: www.onetonline.org



Urban and Regional Planner



QWOWTM
Qualcomm® World of Work

Inspired by Qualcomm® Thinkabit LabTM

Urban and Regional Planner

I am responsible for developing comprehensive plans and programs for the use of real estate and physical facilities in towns, cities, counties, and metropolitan areas.

Wages & Employment Trends

Median Wages (2016)

\$33.66 hourly, \$70,020 annually

Projected Growth (2014-2024)

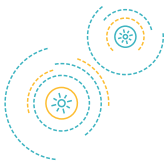
 **Average (5% to 8%)**

Education Level Required

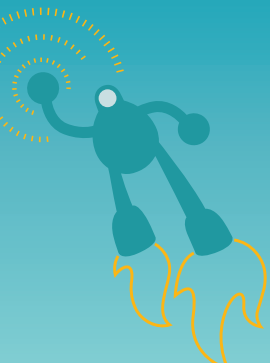
8		Bachelor's degree
81		Master's degree
6		Professional degree

O*NET Search Code  19-3051.00

Source: www.onetonline.org



User Interface Designer



QWOWTM
Qualcomm® World of Work

Inspired by Qualcomm® Thinkabit Lab™

User Interface Designer

I am responsible for making it easier for consumers to use our technology. I work on usability features, such as responsiveness, legibility, discoverability, and consistency of performance. Sometimes I file patents on my unique ideas.

Wages & Employment Trends

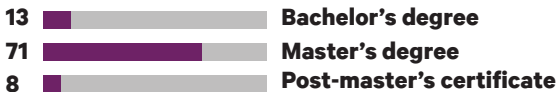
Median Wages (2016)

\$40.53 hourly, \$84,310 annually

Projected Growth (2014-2024)

■ ■ ■ ■ **Little or no change (-1% to 1%)**

Education Level Required



O*NET Search Code  17-2112.01

Source: www.onetonline.org